



CASE STUDY

Jackie Stephenson – Headteacher
Mapledene Primary School

AT A GLANCE

PREVIOUS CHALLENGES

- Having a whole school focus on improvement
- Staff appraisals having a short term affect on teachers

CURRENT BENEFITS

- All staff members are involved with the schools improvement
- Constant reminders of appraisals and objectives
- Makes teachers more aware of their own practices



"...There is a real desire to move to good and outstanding practice...."

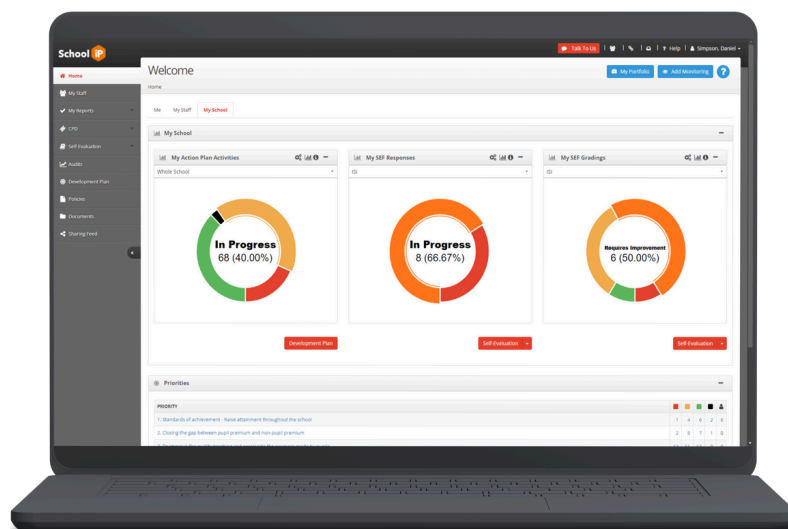
JACKIE STEPHENSON

Headteacher
Mapledene Primary School



OVERVIEW

Mapledene Primary School is located in Birmingham and currently has around 330 students ranging from 4-11. Mapledene Primary School was opened in January of 2004 and joined SchooliP back in 2017. Since starting with SchooliP, Jackie has become more and more comfortable with the system, Jackie now shares with us her thoughts on SchooliP and how it has had a huge impact in their school.



IMPACT

Jackie said "Improvement is more likely to happen with SchooliP and teachers are more aware of their own practice. SchooliP's customer care team is always helpful and we receive immediate help which is a huge strength of the product. Having centralised appraisals has helped to get all of our staff engaged, and we are on the same page."

Jackie also stated "The level of support that I receive is consistently very good. If I ever have any queries, I make contact via email and always receive a prompt reply."